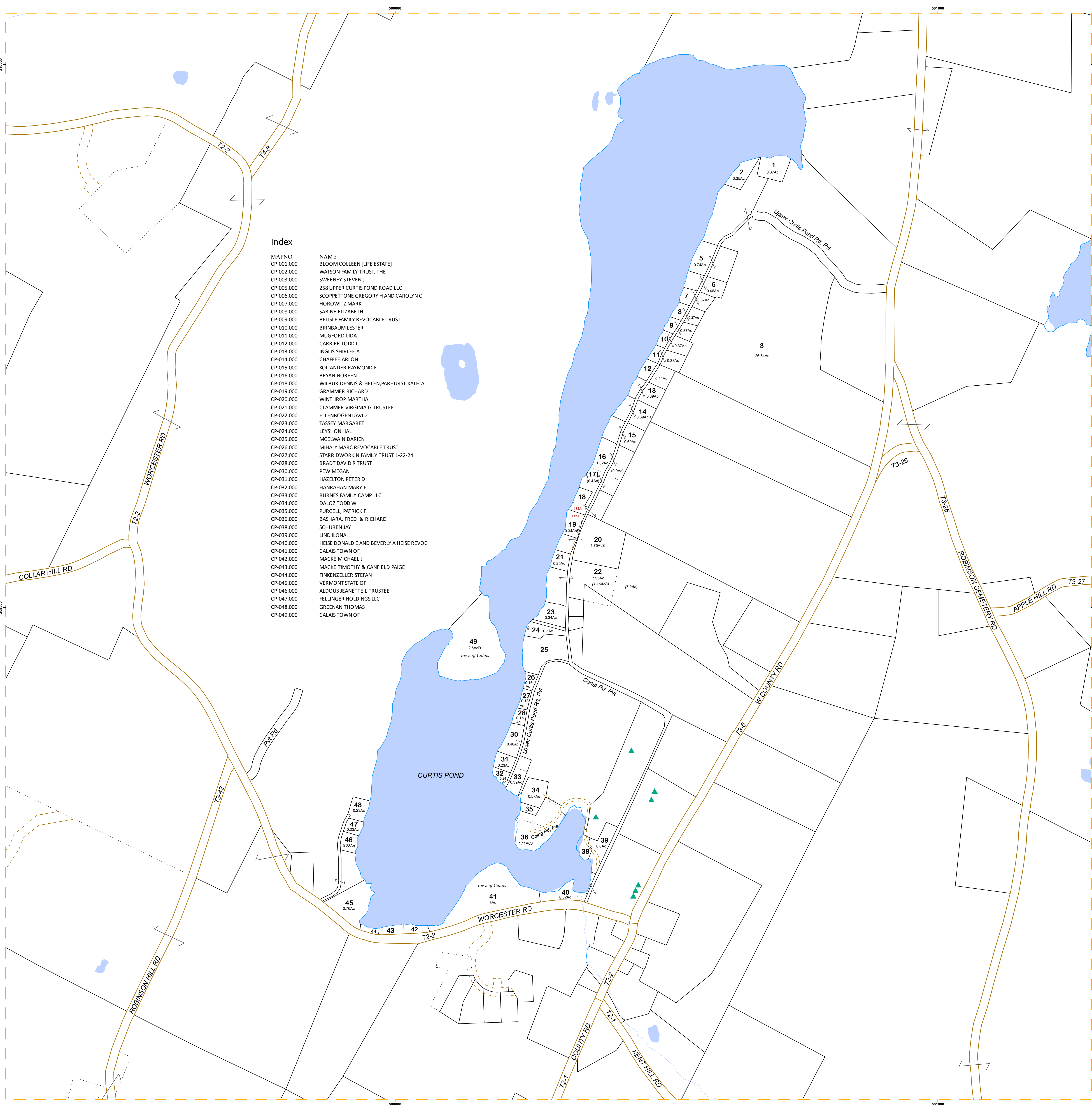


Index

MAPNO	NAME
CP-001.000	BLOOM COLLEEN (LIFE ESTATE)
CP-002.000	WATSON FAMILY TRUST, THE
CP-003.000	SWEENEY STEVEN J
CP-005.000	258 UPPER CURTIS POND ROAD LLC
CP-006.000	SCOPPETTONE GREGORY H AND CAROLYN C
CP-007.000	HOROWITZ MARK
CP-008.000	SABINE ELIZABETH
CP-009.000	BELISLE FAMILY REVOCABLE TRUST
CP-010.000	BIRNBAUM LESTER
CP-011.000	MUGFORD LIDA
CP-012.000	CARRIER TODD L
CP-013.000	INGLIS SHIRLEE A
CP-014.000	CHAFFEE ARLON
CP-015.000	KOLIANDER RAYMOND E
CP-016.000	BRYAN NOREEN
CP-018.000	WILBUR DENNIS & HELEN, PARHURST KATH A
CP-019.000	GRAMMER RICHARD L
CP-020.000	WINTHROP MARTHA
CP-021.000	CLAMMER VIRGINIA G TRUSTEE
CP-022.000	ELLENBOGEN DAVID
CP-023.000	TASSEY MARGARET
CP-024.000	LEYSHON HAL
CP-025.000	MCLEWAIN DARIEN
CP-026.000	MIHALY MARC REVOCABLE TRUST
CP-027.000	STARR DWORKIN FAMILY TRUST 1-22-24
CP-028.000	BRADT DAVID R TRUST
CP-030.000	PEW MEGAN
CP-031.000	HAZELTON PETER D
CP-032.000	HANRAHAN MARY E
CP-033.000	BURNES FAMILY CAMP LLC
CP-034.000	DALOZ TODD W
CP-035.000	PURCELL, PATRICK F.
CP-036.000	BASHARA, FRED & RICHARD
CP-038.000	SCHUREN JAY
CP-039.000	LIND ILONA
CP-040.000	HEISE DONALD E AND BEVERLY A HEISE REVOC
CP-041.000	CALAIS TOWN OF
CP-042.000	MACKE MICHAEL J
CP-043.000	MACKE TIMOTHY & CANFIELD PAIGE
CP-044.000	FINKENZELLER STEFAN
CP-045.000	VERMONT STATE OF
CP-046.000	ALDOUS JEANETTE L TRUSTEE
CP-047.000	FELLINGER HOLDINGS LLC
CP-048.000	GREENAN THOMAS
CP-049.000	CALAIS TOWN OF



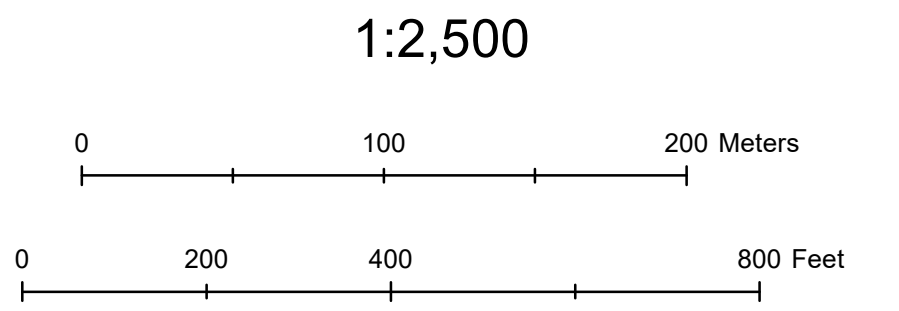
UPDATES BY
CHRISTINE CHAMBERLAIN
 MAPPING
 UPDATED THROUGH APRIL 1, 2024

THIS MAP IS FOR ASSESSMENT PURPOSES ONLY. IT IS NOT TO BE USED FOR DESCRIPTION, CONVEYANCE, OR DETERMINATION OF LEGAL TITLE. ALL INFORMATION IS SUBJECT TO CHANGE.

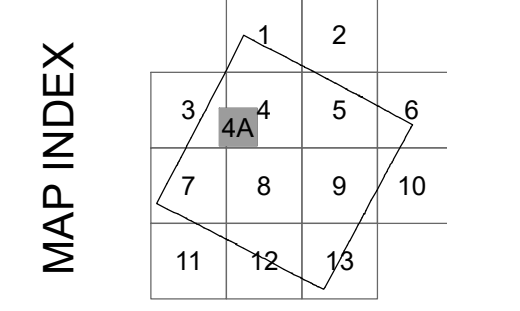
LEGEND

Town Boundary	Right-of-Way
Public Road Right-of-Way	Surface Water
Parcel Boundary	Unlanded Property
Parcel Boundary Water	Match Line
Subparcel Boundary	
Parcel Hook	

2 Parcel Number
 (2) Subparcel Number
 AcD Acres Deeded
 AcS Acres Surveyed
 08-003 Map Number from Next Sheet
 500000 State Plane Coord(m)



TOWN OF
CALAIS
 VERMONT



LOCAL MAP NO.
4A