

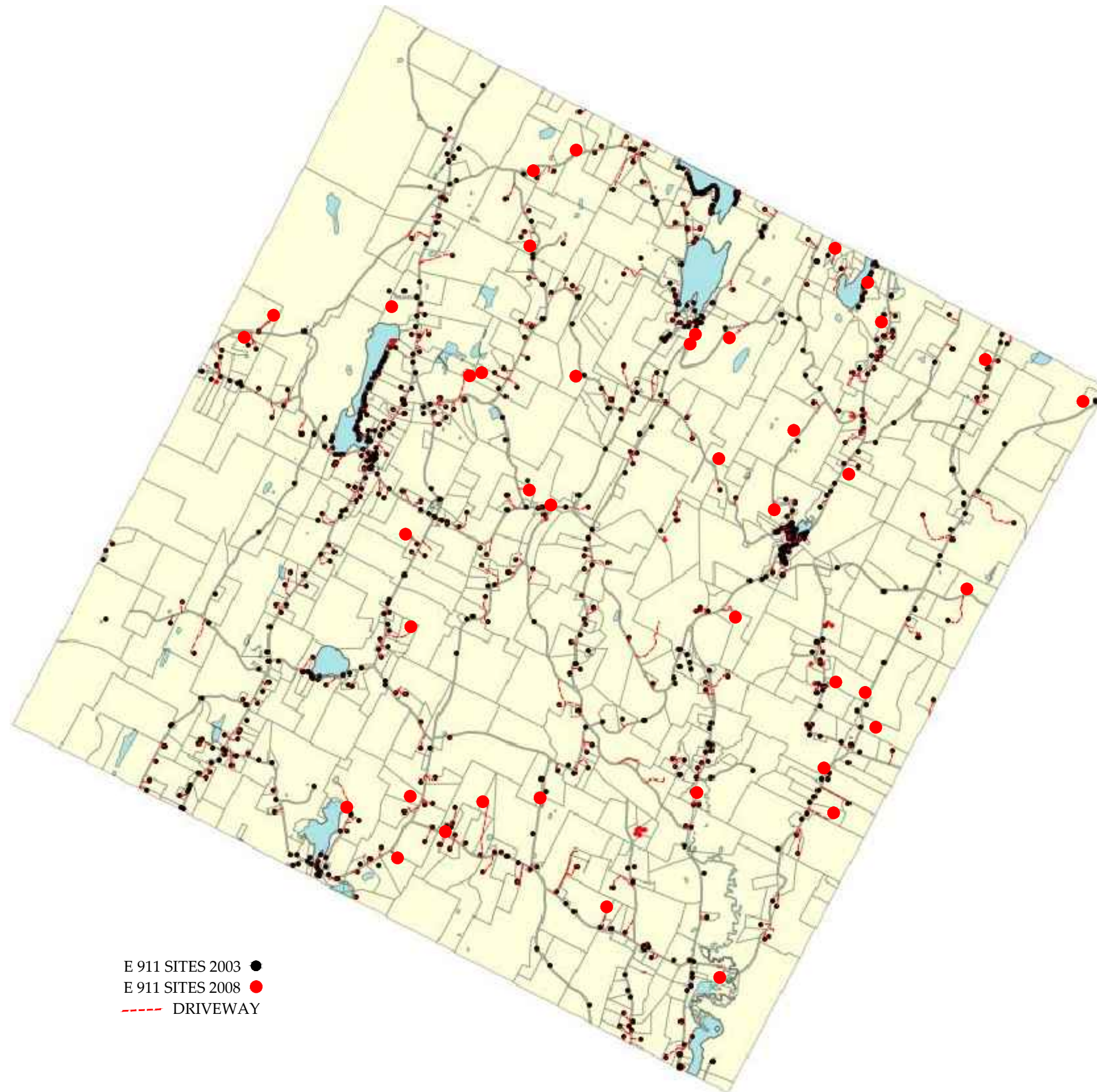
TOWN of CALAIS

Development Patterns

Originator: JVM

The graphic representation of E911 sites was prepared by the Vermont E 9-1-1 Board. Black dots represent E 9-1-1 sites as of the first date indicated for each map. Red dots represent sites added as of the second date indicated for each map. Not all dots represent new development; some existing facilities were added to the E 9-1-1 site maps. Also, not all representations are structures; some include communication utility terminals. Overall, distribution of red dots does suggest a development pattern over time.

Growth between 2003 & 2008



E 911 SITES 2003 ●
E 911 SITES 2008 ●
----- DRIVEWAY