

East Calais Village Demonstration Project: Draft Design

ALL FIGURES ARE APPROXIMATE

Reuben MacMartin – CVRPC

3 June 2024

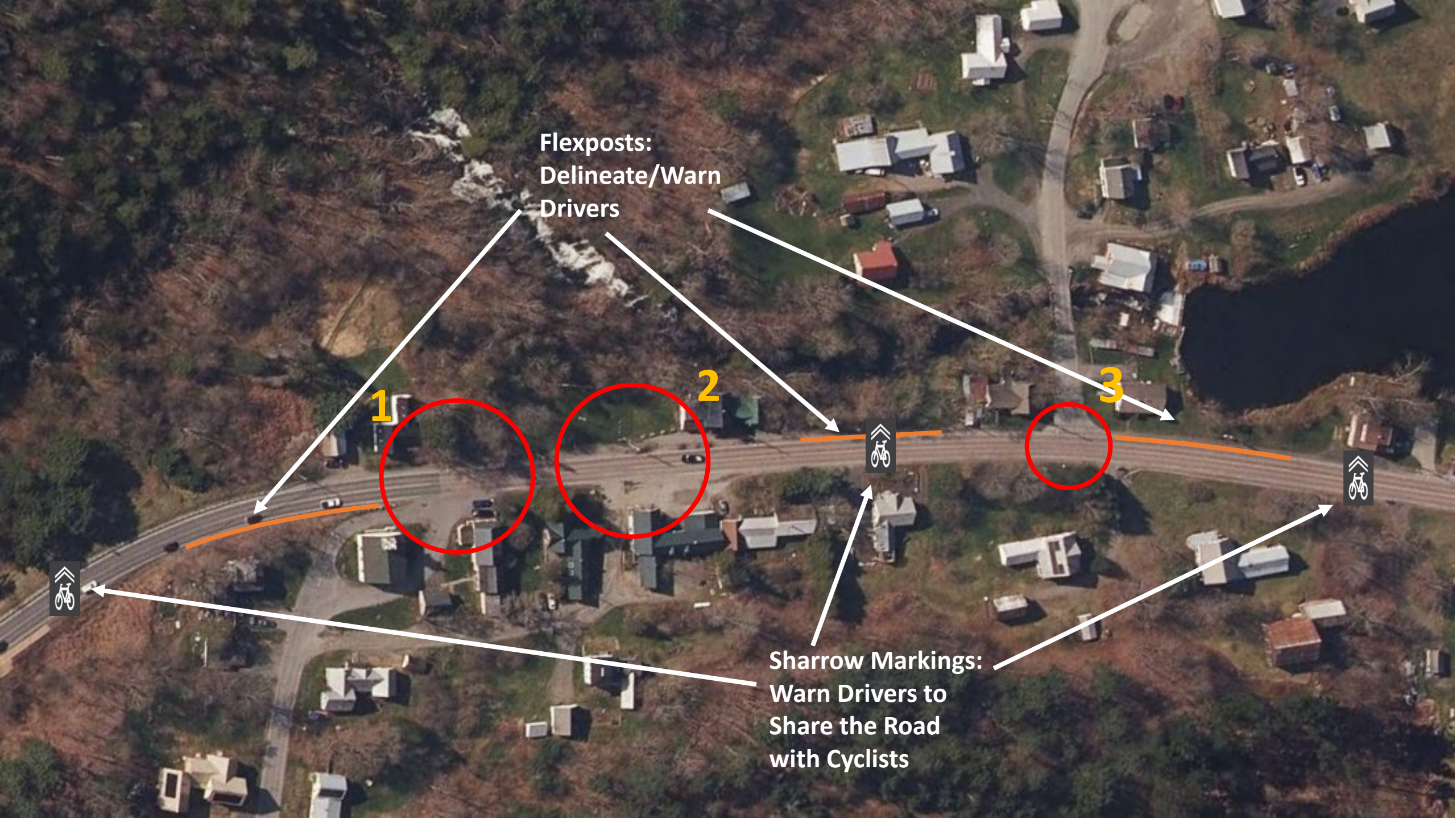
**Flexposts:
Delineate/Warn
Drivers**

1

2

3

**Sharrow Markings:
Warn Drivers to
Share the Road
with Cyclists**



1

Flex Posts:
Define Edge, Tighten Perceived
Geometry for Drivers

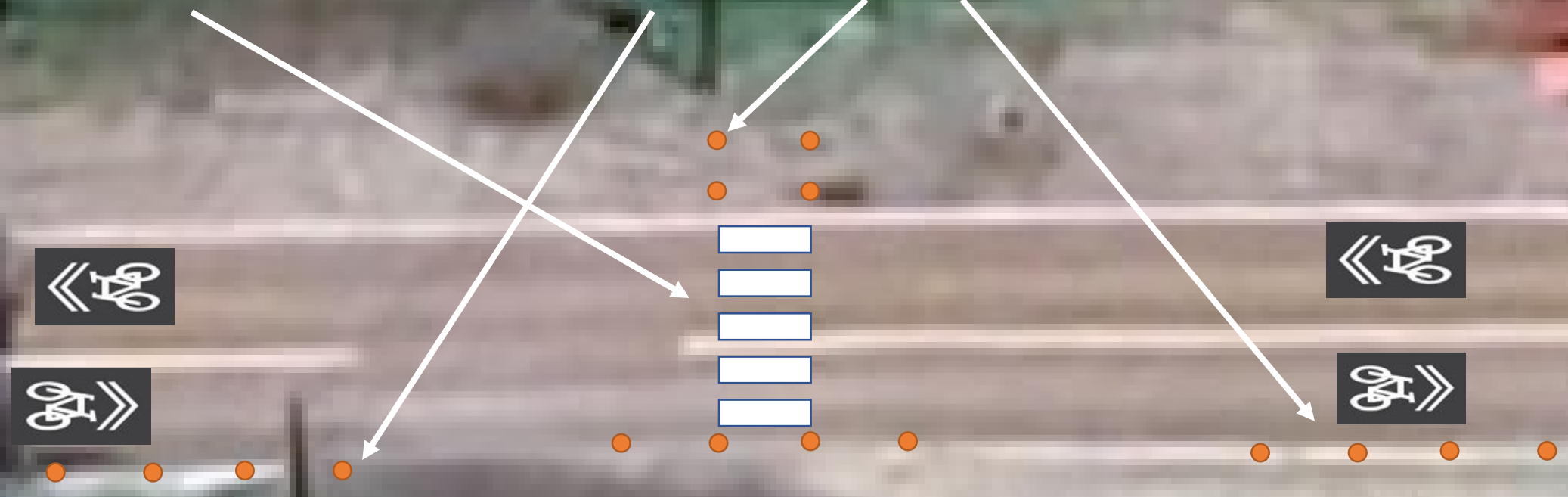


ALL FIGURES ARE APPROXIMATE

2

Temporary Crosswalk

Flex Posts:
Define Edge, Tighten Perceived Geometry for Drivers



ALL FIGURES ARE APPROXIMATE

3

ALL FIGURES ARE APPROXIMATE



Temporary Crosswalk

Flexposts:
Call Attention
to X-Walk/
Warn Drivers